

# SEAMAX

MARINE PUMPS & PARTS

AVAILABLE EXCLUSIVELY FROM SEABOARD MARINE

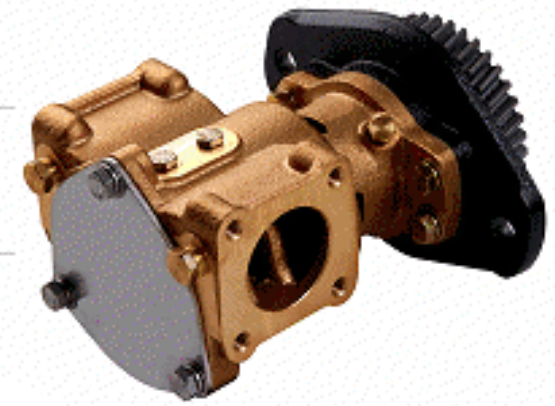
## SEABOARD MARINE

CUSTOM MARINE DIESEL REPOWER SPECIALISTS

---

### Seamax Marine Pumps Model 1730 Pump

---



#### Why the SMX 1730 Pump and how did this all come about??

This all started about 1988 when Cummins released the (infamous to some) 6BTA 300, sometimes referred to as the CPL 970. About that time Sherwood and Cummins struck a deal that allowed Sherwood to become the exclusive supplier of seawater pumps for them.

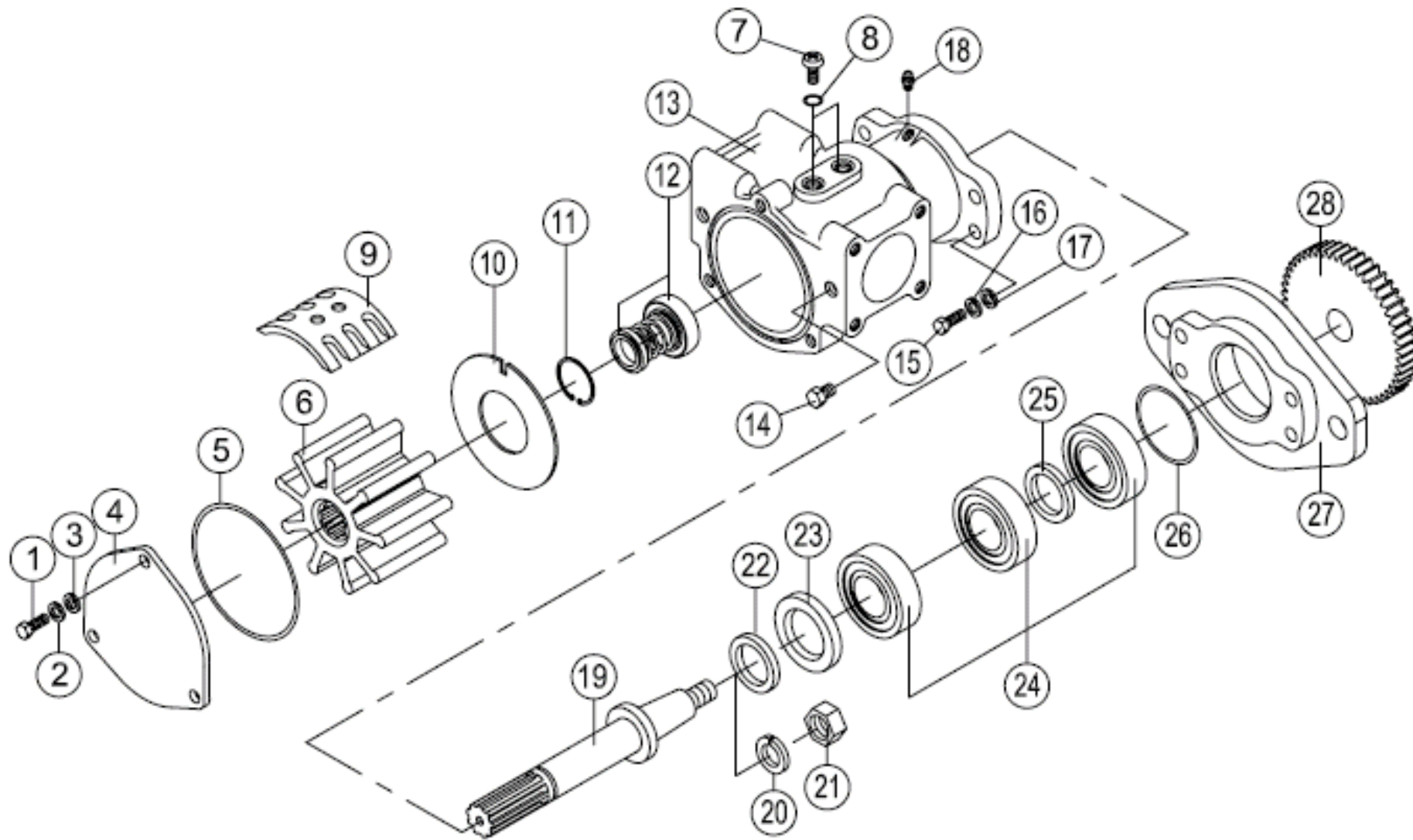
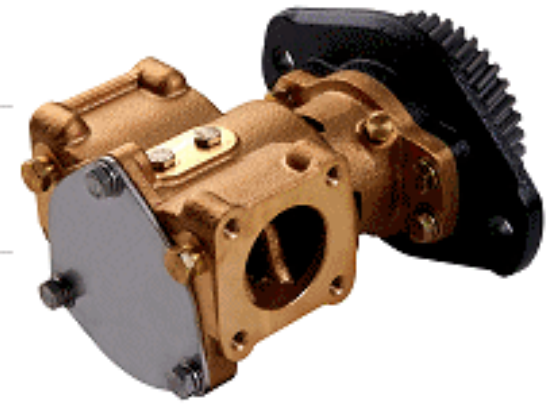
What I call "Design Defects" in the new Sherwood Pump that was installed on the new generation Cummins 300B marine engines (1700 series) became apparent soon after its release, and over the 16-17 years that followed, as Sherwood made different versions of this same "base pump," the number of design defects grew along with the new models. Now keep in mind, as we are not talking about seal and bearing wear/failures here, we are talking about real defects in design that I have never seen with any other seawater pump I have dealt with. By the time their most popular version was released, the 1730 (in about 1995), soon thereafter it was obvious that something had to be done to help solve this seawater pump failure dilemma that was now causing direct harm to my livelihood because this pump was being installed on the new Cummins Diamonds that were now the mainstay of my engine sales and repower part of my business.

#### Model 1730 Pump - Features

---

- Exclusive design for 100% "PLUG & PLAY" replacement on all Cummins B & C Diamonds
- Features a triple bearing design, using engine oil for bearing lubrication with an "emergency lube" zerk option. While not necessary on the current applications, this feature will be extremely beneficial for our upcoming QSB model release. The Sherwood QSB seawater pump design is externally belt driven, needs that "extra lube" squirt every 200-300 hours, and our pump is ready for the task.
- Genuine AQ-19 SS pump shaft has been upgraded to a unique one piece design and has only one cir-clip providing considerably more strength than it's predecessors. Our latest addition, model QSB SMX 2701 (available early 2009) will benefit greatly from this unique high strength 1-piece shaft design. We are very excited about the changes and additions to our product line in our continued commitment toward providing excellent products at an affordable price.
- "Detroit Style" mechanical water seal w/ aft-mounted double lip oil-lubed "oil seal"
- Impeller has splined naval brass inner hub for ease of replacement - NO MORE KEYS or plugs
- Made from proven seawater resistant alloys of bronze, brass & SS - no "JUNK" metals
- Redesigned front flange for easier R&R on the 6BTA Diamonds - "clears" front mount
- New cam design eliminates any chance of the dreaded "Spinning Cam Syndrome"
- Exclusive 316 SS inner wear plate & locking design - Eliminates "Spinning Wear Plate" failures
- Simple rebuilds using commonly available tools, bearings & seals
- Documented 3000 hour + "real life application" on cams, wear plates and other internal wear parts
- Special intake and outlet ports available for "custom installs" or early engine upgrades

### Seamax Marine Pumps Model 1730 Pump - Service & Spare Parts List



Number	Part Number	Part Name	Quantity
1	1730-010	Front Cover Screws	3
2	1730-020	Spring Washer	3
3	1730-030	Washer	3
4	1730-040	Front Cover	1
5	1730-050	O-Ring	1
6	1730-060	Impeller	1
7	1730-070	Cam Screw	2
8	1730-080	O-Ring	2
9	1730-090	Cam	1
10	1730-100	Wearplate	1
11	1730-110	Snap Ring	1
12	1730-120	Mechanical Seal	1
13	1730-130	Body	1
14	1730-140	Plug	2
15	1730-150	Bolt	4

Number	Part Number	Part Name	Quantity
16	1730-160	Spring Washer	4
17	1730-170	Washer	4
18	1730-180	Grease Nipple	1
19	1730-191	Shaft	1
20	1730-200	Washer	1
21	1730-210	Nut	1
22	1730-220	Rubber Slinger	1
23	1730-230	Oil Seal	1
24	1730-240	Bearing	3
25	1730-261	Washer	1
26	1730-270	O-Ring	1
27	1730-280	Flange	1
28	1730-290	Gear	1

